



110% Self Bunded **BAFFLED CUBE SERIES**

For the storage and dispensing of Diesel, Kerosene, Lubricants, Petrol and Waste Oil.



FEATURES:

- Unique tank in tank design approved to UL142 / ULCS601 / ULCS603 / AS1940, AS1692 / BS799 / PPG2. Removable lid for ease of maintenance.
- The outer tank will hold 110% of the inner tank's capacity.
- UN31A/Y approved for the transport of Dangerous Goods by Road, Rail and Sea, Packaging Groups II & III.
- Pumps, connections and hoses are housed and can be locked within the bund, even in use.
- Secure hose entry and exit ports.
- Tank can feed and return from up to 3 generators at once.
- Fully certified Crane Lifting Lugs, tank can be lifted when full of liquid.
- 4 x way forklift pockets.
- Mechanical contents gauge.
- Fully lockable lid on gas struts.
- Generator hose suction and return points.
- Stackable - 3-high empty and 2-high when full.
- Supplied with all required statutory decals.



Cube with Fuel Station Style Bowser Dispenser



Cube with Waste Oil Configuration



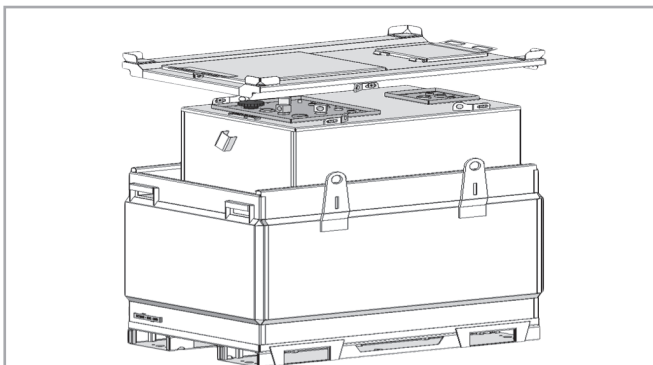
PETRO

HIRE 

petrohire.com.au

PRODUCT RANGE:

Size	Safe Fill Level	Length (mm)	Width (mm)	Height (mm)	Empty Weight (kg)	Full Weight (kg)
450L	420L	1300	1000	750	380	763
1100L	1000L	1577	1132	1235	680	1680
2000L	1800L	2550	1130	1235	980	2680
3000L	2700L	3630	1130	1235	1139	3840
4500L	4100L	3000	2000	1235	1650	5175
6300L	5950L	3560	2166	1235	2450	7205
6500L	5950L	3000	2400	1300	2500	7920
8000L	7700L	4600	2246	1235	2880	9500
10000L	9000L	5750	2108	1210	3500	11500
13000L	12000L	6000	2400	1300	4500	15400



Innovative Tank in Tank Design



Typical Inner Tank Configuration



4 x Forklift Pockets

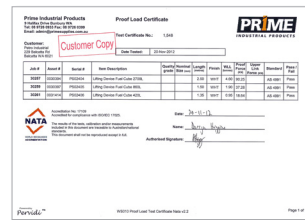


PETRO Cube with PIUSI Cube70 Transfer Pump

CERTIFICATIONS



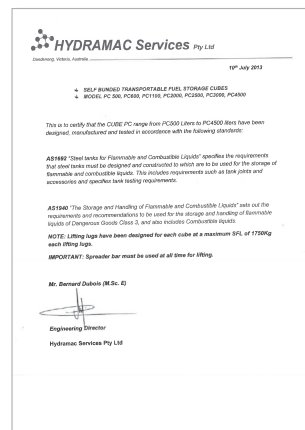
Certificate of Compliance #20121129-MH49493 for UL 142, ULC-S601, and ULC-S653.



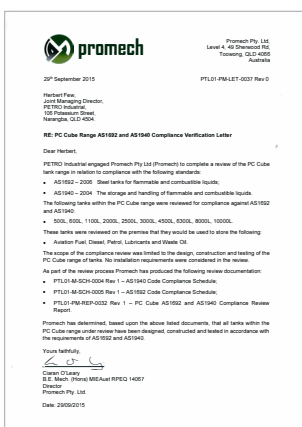
WS1010 Proof Load Test Certificate Nata v2.2, #1,548. Accreditation No. 17109. Accredited for Compliance with ISO/IEC 17025.



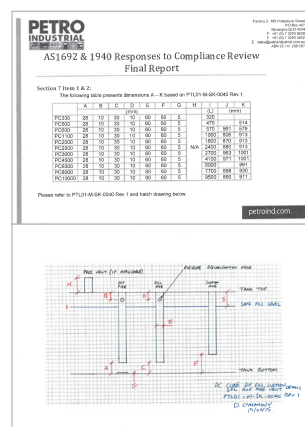
Decals manufactured to comply with AS1319 and AS2700.



Cube Lifting Lug Certification for AS1692 and AS1940.



Cube Range AS1692 and AS1940 Compliance Verification.



Internal Piping Dimensions Compliance Review Final Report. AS1962 and AS1940.

PETRO Contact Information

AUSTRALIA

Eastern Australia

Factory 2, 106 Potassium Street
PO Box 407
Narangba QLD 4504
P: 1300 987 789
E: sales@petroindustrial.com.au

Western Australia

173 Mulgul Road
Malaga WA 6090
P: 1300 987 789
E: sales@petroindustrial.com.au

AFRICA

South Africa

Factory 14 Bentonite Street
Alrode, Alberton, Johannesburg
South Africa
P: +27 (0)11 864 7758
F: +27 (0) 11 864 1649
E: sales@petroindustrial.co.za

MIDDLE EAST

Dubai

Office LB17233, Lobby Building 17
Jebel Ali Free Zone
PO Box 18602
Dubai, United Arab Emirates
P: +971 488 76688
E: salesuae@petroind.com

PETRO INDUSTRIAL



petroind.com